



## 21 Floathaven Close, London, SE28 8SN Offers in excess of £310,000

Good Move are delighted to present this two-bedroom terrace house to the market situated in a convenient London location, offering excellent potential for modernisation and a spacious, low-maintenance rear garden.

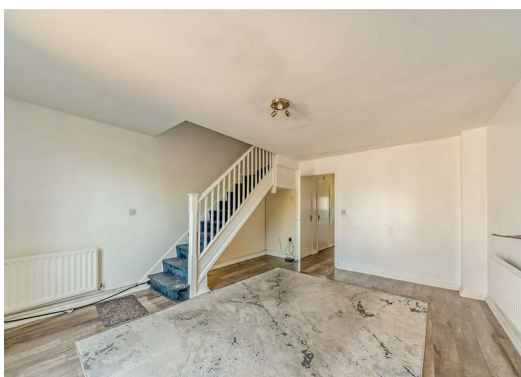
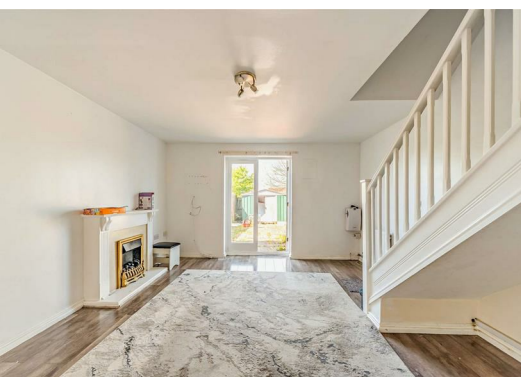
Requiring a degree of refurbishment, this property presents an excellent opportunity for first-time buyers, investors, or those looking to create a home tailored to their own style. Early viewing is highly recommended.

The property is entered via a central hallway, providing access to the main living areas. To the rear, a generously sized living room offers a bright and versatile space with direct access to the garden. The separate kitchen is positioned to the front of the property and a ground floor WC and useful storage cupboard add to the practicality of the layout.

To the first floor, there are two well-proportioned double bedrooms arranged around a central landing, along with a family bathroom.

Externally, the property benefits from a particularly generous rear garden.

Situated in Thamesmead, Pitfield Crescent offers excellent access to local amenities including shops, supermarkets, and schools. Thamesmead Town Centre is close by, as are scenic riverside walks and parks. For commuters, the property is well-connected via local bus routes, Woolwich Arsenal (DLR & mainline), and Abbey Wood (Elizabeth Line), providing swift links into Central London and beyond.



**Disclaimer**

- 1. MONEY LAUNDERING REGULATIONS:** Intending purchasers will be asked to produce identification documentation at a later stage and we would ask for your co-operation in order that there will be no delay in agreeing the sale.
- 2. General:** While we endeavour to make our sales particulars fair, accurate and reliable, they are only a general guide to the property and, accordingly, if there is any point which is of particular importance to you, please contact the office and we will be pleased to check the position for you, especially if you are contemplating travelling some distance to view the property.
- 3. Measurements:** These approximate room sizes are only intended as general guidance. You must verify the dimensions carefully before ordering carpets or any built-in furniture.
- 4. Services:** Please note we have not tested the services or any of the equipment or appliances in this property, accordingly we strongly advise prospective buyers to commission their own survey or service reports before finalising their offer to purchase.
- 5. THESE PARTICULARS ARE ISSUED IN GOOD FAITH BUT DO NOT CONSTITUTE REPRESENTATIONS OF FACT OR FORM PART OF ANY OFFER OR CONTRACT. THE MATTERS REFERRED TO IN THESE PARTICULARS SHOULD BE INDEPENDENTLY VERIFIED BY PROSPECTIVE BUYERS OR TENANTS. NEITHER GOODMOVE NOR ANY OF ITS EMPLOYEES OR AGENTS HAS ANY AUTHORITY TO MAKE OR GIVE ANY REPRESENTATION OR WARRANTY WHATEVER IN RELATION TO THIS PROPERTY.**

